

# ProForm<sup>®</sup> BRAND Texture Products

For new construction or remodeling, ProForm<sup>®</sup> BRAND offers a complete line of interior ceiling and wall textures. Textures provide an innovative time and money-saving option to ordinary painting. Textures are available in several light-reflecting finishes which provide a wide range of texturing possibilities on surfaces such as drywall, concrete, plaster, wood and metal. (Surfaces must be primed with a good quality primer recommended for the substrate.)

## ProForm<sup>®</sup> Perfect Spray



### Description

A decorative texture product with shredded polystyrene aggregate for fast spray application to interior ceiling surfaces. Available in fine, medium and coarse textures.

### Applications

Interior ceilings that are formed of new, primed or previously painted gypsum wallboard or monolithic concrete or plaster

### Features/Benefits

- Easy mixing, low fallout
- Works with standard spray equipment
- Greater whiteness, better hide and bold accent
- Provides innovative time/money savings option to ordinary painting

### Packaging

40 lb. (18.2 kg) bags

**Approx. Coverage:**  
300-400 sq. ft.  
(27-37 sq. m)/bag

**Mixing:**  
3-4 gal. (11.3-15.1 L)  
water/bag

**Availability:**  
Nationwide

## ProForm<sup>®</sup> Wall & Ceiling Spray



### Description

A non-aggregated texture product used to create a wide range of wall and ceiling surfaces. When spraying walls, can be applied without overspray affecting ceiling. By adjusting mixture consistency and/or varying the pressure, creates an endless variety of textures – Spray Spatter, Spatter Knockdown and Orange Peel.

### Applications

- Used for both walls and ceilings
- Wall surface should be finished with a coat of paint
- Concrete should be coated with an alkali-resistant primer/sealer prior to texturing

### Features/Benefits

- Time and money-saving option to ordinary painted ceilings
- Textures available in several light-reflecting finishes
- Formulated for easy mixing and easy pumping
- Surface can be finished with a coat of paint

### Packaging

50 lb. (22.7 kg) bags

**Approx. Coverage:**  
500-1,500 sq. ft.  
(46-139 sq. m)/bag

**Mixing:**  
4-5 gal. (15-19 L)  
water/bag

**Availability:**  
Nationwide

## ProForm<sup>®</sup> Perfect Spray EM



### Description

A non-aggregated texture product used to create a wide range of wall and ceiling surfaces. When spraying walls, can be applied without overspray affecting ceiling. By adjusting mixture consistency and/or varying the pressure, creates an endless variety of textures – Spray Spatter, Spatter Knockdown and Orange Peel.

### Applications

- Used for both walls and ceilings
- Wall surface should be finished with a coat of paint
- Concrete should be coated with an alkali-resistant primer/sealer prior to texturing

### Features/Benefits

- Time and money-saving option to ordinary painted ceilings
- Textures available in several light-reflecting finishes
- Formulated for easy mixing and easy pumping
- Surface can be finished with a coat of paint

### Packaging

50 lb. (22.7 kg) bags

**Approx. Coverage:**  
500-1,500 sq. ft.  
(46-139 sq. m)/bag

**Mixing:**  
4-5 gal. (15-19 L)  
water/bag

**Availability:**  
Nationwide  
(excluding Western Region)

## ProForm<sup>®</sup> Perfect Spray HF



### Description

A non-aggregated texture product used to create a wide range of wall and ceiling surfaces. When spraying walls, can be applied without overspray affecting ceiling. By adjusting mixture consistency and/or varying the pressure, creates an endless variety of textures – Spray Spatter, Spatter Knockdown and Orange Peel.

### Applications

- Used for both walls and ceilings
- Wall surface should be finished with a coat of paint
- Concrete should be coated with an alkali-resistant primer/sealer prior to texturing

### Features/Benefits

- Time and money-saving option to ordinary painted ceilings
- Textures available in several light-reflecting finishes
- Formulated for easy mixing and easy pumping
- Surface can be finished with a coat of paint

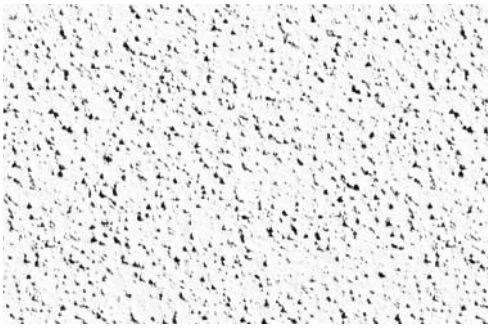
### Packaging

50 lb. (22.7 kg) bags

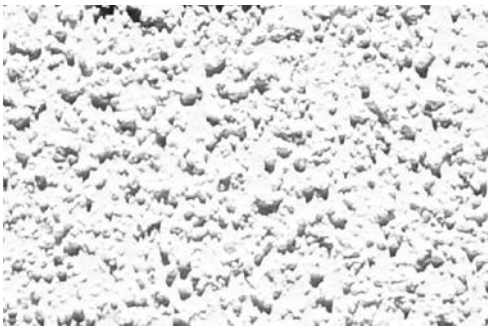
**Approx. Coverage:**  
500-1,500 sq. ft.  
(46-139 sq. m)/bag

**Mixing:**  
4-5 gal. (15-19 L)  
water/bag

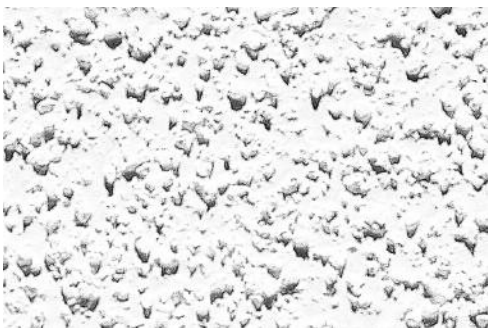
**Availability:**  
Central Region  
Midwest Region



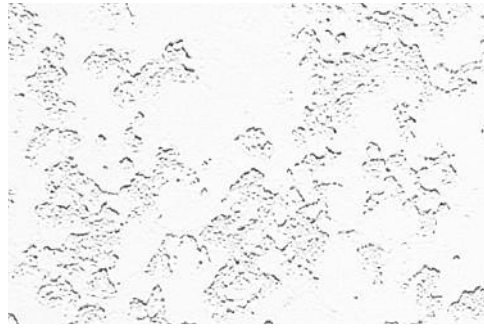
**Perfect Spray Fine**



**Perfect Spray Medium**



**Perfect Spray Coarse**



**Perfect Spray EM, HF and Wall & Ceiling Spray – Spatter + Knockdown**



**Perfect Spray EM, HF and Wall & Ceiling Spray – Orange Peel**



**Perfect Spray EM, HF and Wall & Ceiling Spray – Spatter**

## Recommended Construction Practices

### APPLICATION GYPSUM WALLBOARD:

Surfaces, including joint-treated areas, must be smooth, clean and dry. First apply a coat of sealing primer. Allow primer to dry thoroughly, and maintain adequate drying conditions after application. Primer is to minimize sagging of gypsum wallboard and discoloration or difference in sheen on ceiling surface. Add dry texture to water. Use a piston pump or Mono-type pump with a texture gun. Minimum 3/4" I.D. material hose. A hopper-type gun with adequate air supply is also suitable. Typical coverage is 8-10 sq. ft. per lb. for aggregated and 10-30 sq. ft. per lb. for nonaggregated textures. Mask appropriate areas before spraying and promptly remove overspray from unprotected surfaces afterward. Follow the instructions of the spray equipment manufacturer for adjusting controls and cleaning. If a second coat is desired, allow the first coat to dry thoroughly.

**Note:** Gypsum wallboard ceiling surfaces to be decorated with water-thinned spray texture shall be 1/2" or 5/8" thick and applied perpendicular to the framing. Framing shall not exceed 16" o.c. for Gold Bond® BRAND 1/2" Regular Wallboard and 24" o.c. for 1/2" High Strength™ Ceiling Board and Gold Bond® BRAND 5/8" Wallboard.

### CONCRETE:

Allow concrete to cure for at least 28 days. Clip protruding wire ends and spot with rust-inhibitive primer. Remove all form oil, grease and dirt, or any loose or water-soluble material. Grind down any form ridges, and level any remaining unevenness with ProForm® Quick Set Joint Compound. Apply a coat of alkali-resistant sealing primer over the entire surface to be textured.

### SPRAY TEXTURES

ProForm BRAND	Application	Aggregate	Bag Size	Mixing Water per Bag	Typical Coverage per Bag
<b>Perfect Spray</b>	ceilings	shredded polystyrene	40 lbs.	3–4.5 gal.	300–400 sq. ft.
<b>Perfect Spray EM Wall &amp; Ceiling Spray</b>	walls & ceilings	none	50 lbs.	4–5 gal.	500–1,500 sq. ft.
<b>Perfect Spray HF</b>	walls & ceilings	none	40 lbs.	3.5–4.5 gal.	400–1,200 sq. ft.

**NOTE:** Burning Characteristics: Flame Spread–10, Smoke Developed–25