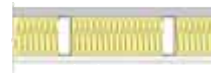

7

1 hr.



UL V452
ITS/WHI J99-4001

1/2" (12.7 mm) PermaBase cement board screw attached horizontally or vertically on one side to 3 5/8" steel studs 16" o.c. (406 mm) and 5/8" (15.9 mm) Fire-Shield Wallboard screw attached vertically on opposite side, joints staggered, 3" (76 mm) thick mineral wool batts [2.5 pcf (40 kg/m³)] in stud cavity.

45

NGC
2099015

24

2 hr.

UL
ITS/WHIV452
J98-32931

1/2" (12.7 mm) PermaBase cement board face layer screw attached vertically over 1/2" (12.7 mm) Fire-Shield C Wallboard base layer on one side to 3 5/8" steel studs 16" o.c. (406 mm) and double layer of 1/2" (12.7 mm) Fire-Shield C Wallboard applied vertically to opposite side with 3" (76 mm) thick mineral wool insulation batts [2.5 pcf (40 kg/m³)] in stud cavity. All joints staggered between face and base layers.

52

NGC
2099016